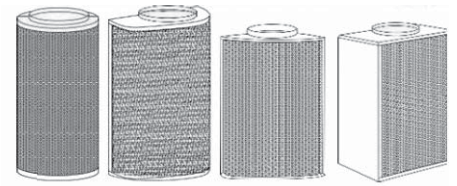


DISPLACEMENT TERMINAL - DTS

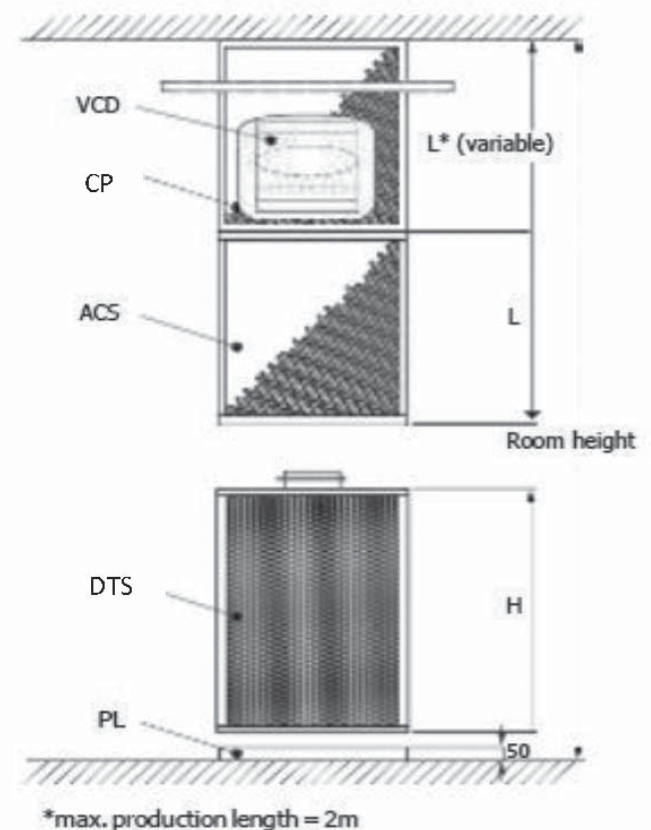
DESCRIPTION & FEATURES

Displacement diffusers series DTS are built in standard construction, sizes and surface finishes. The surface finish is powder coated RAL 9010 as standard. The outer active casing is made from perforated sheet steel plate, an inner baffle casing ensures equal air distribution over the whole unit.



DTS ORDERING CODE	
Series	DTS
Type	R - Round
	HR - Half Round
	QR - Quarter Round
	RE - Recessed
Access	PL - Plinth
	ACS - Noise Reduction Unit
	CP - Cover Plate
	VCD - Volume Control Damper
Finish	1 - (Mill Finish)
	2 - RAL9006 (Silver/Grey)
	3 - RAL9010 (White)
	4 - RAL9005 (Black)
	5 - RAL9003 (White)
	6 - RAL9016 (White),
	7 - Other RAL/BS Code (additional costs may apply)
	8 - Chrome Finish - Powder Coated
Example: DTS/R/PL/ACS/VCD/0/F1/3/315/750h	

DTS ACCESSORIES



DTS PERFORMANCE DATA

SIZE	VOLUME FLOW PER DIFFUSER m ² /h							
	DDS/RE		DDS/HR		DDS/QR		DDS/R	
	Min	Max	Min	Max	Min	Max	Min	Max
125	70	290	180	300	110	300	-	-
200	210	720	290	900	180	800	-	-
250	360	1100	470	1400	290	1200	-	-
315	550	1600	650	1700	550	1700	540	1300
400	900	2300	1080	2500	720	2700	1000	2300
500	1260	3500	1450	3500	1000	3500	1450	3000
630	1450	6000	2500	5500	1260	5500	2150	5000

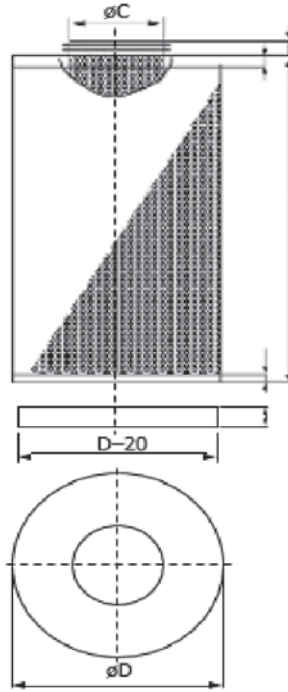
Performance is based on 2-6°C Temperature Difference between Supply Air & Room Air

Min – Max flow rate range for each DDS diffuser size (Max flow rate is based on a noise level of NR45 and a maximum pressure drop of 80Pa.)

Please contact Sales Office for full selection.

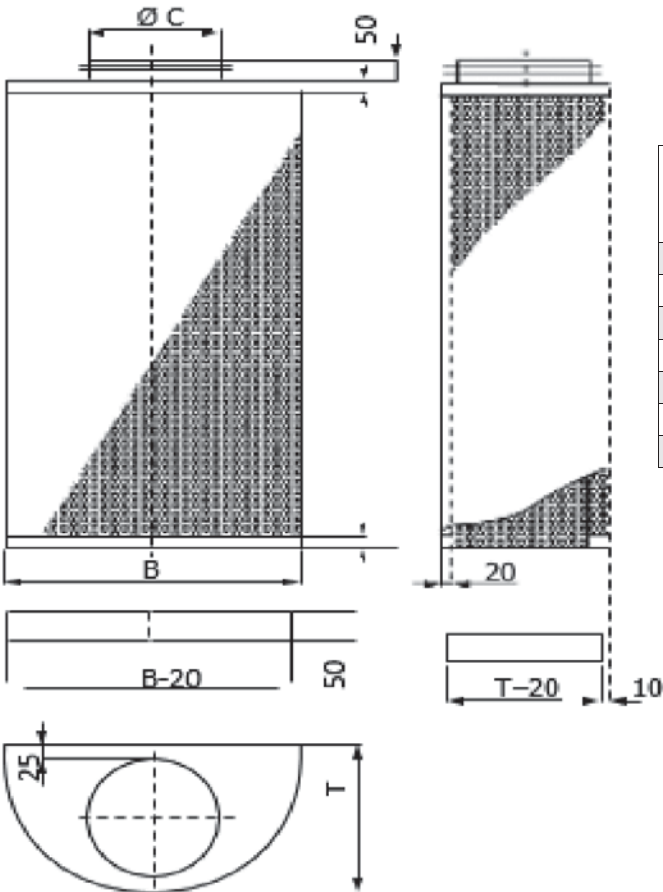
DISPLACEMENT TERMINAL - DTS

DTS DIMENSIONS



DTS/R ROUND

SIZE	DIMENSIONS MM			
	HEIGHT H	DIA B	SPIGOT C	HEIGHT ACS - L
315	750	500	315	600
400	1000	600	400	700
500	1250	700	500	800
630	1500	850	600	900



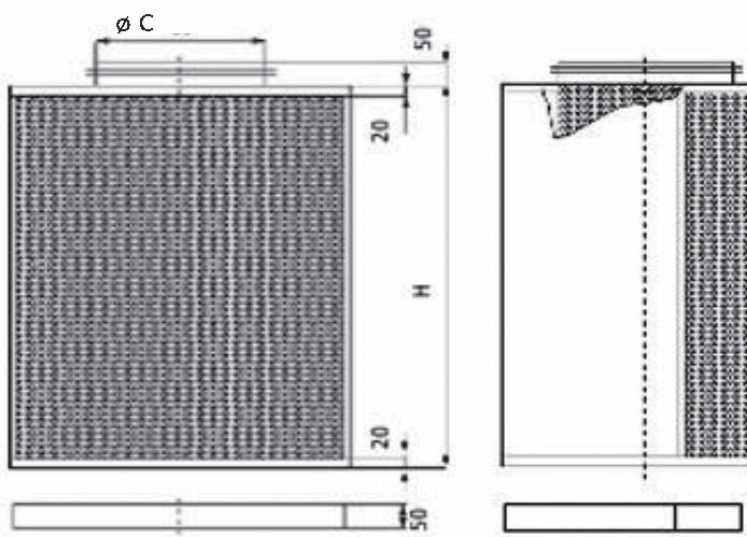
DTS/HR HALF ROUND

SIZE	DIMENSIONS MM				
	HEIGHT H	WIDTH B	DEPTH T	SPIGOT C	HEIGHT ACS - L
125	600	350	205	125	300
200	800	450	255	200	400
250	1000	550	315	250	500
315	1200	650	375	315	600
400	1500	800	460	400	700
500	1800	1000	560	500	800
630	2000	1260	700	630	900

DTS

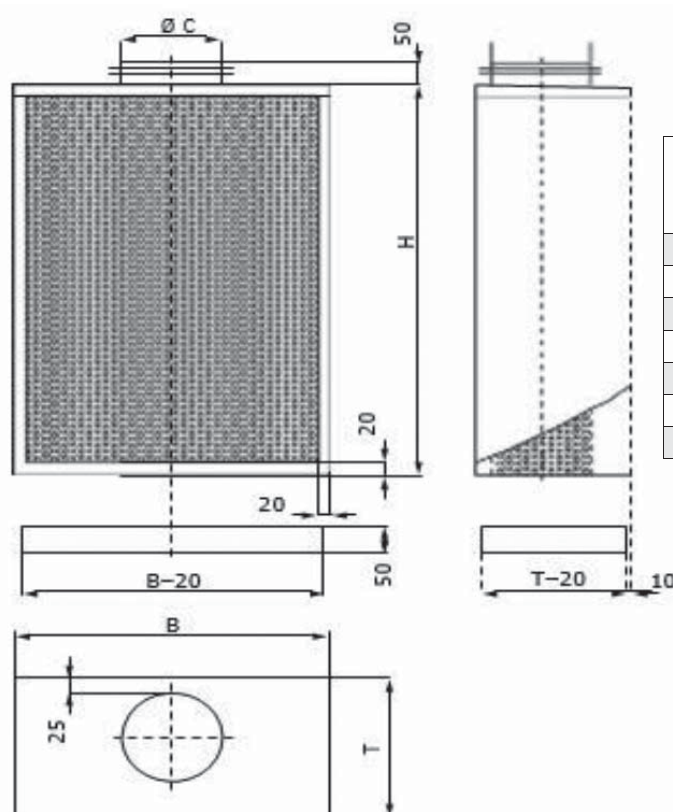
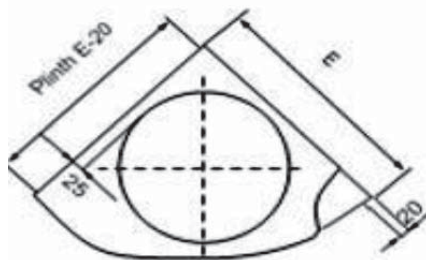
DISPLACEMENT TERMINAL - DTS

DTS DIMENSIONS



DTS/QR QUARTER ROUND

SIZE	DIMENSIONS MM			
	HEIGHT H	E	SPIGOT C	HEIGHT ACS - L
125	600	260	125	300
200	800	335	200	400
250	1000	385	250	500
315	1500	450	315	600
400	1750	560	400	700
500	2000	680	500	800
600	2000	800	630	900



DTS/RE RECESSED

SIZE	DIMENSIONS MM				
	HEIGHT H	WIDTH B	DEPTH T	SPIGOT C	HEIGHT ACS - L
125	500	350	200	125	300
200	800	600	300	200	400
250	900	700	325	250	500
315	1000	850	375	315	600
400	1500	1000	460	400	700
500	2000	1250	560	500	800
630	2000	1500	690	630	900

Notes

DTS